

MRF TURE

Fall 2024

The Quarterly Newsletter of the Manitowoc County Recycling Center & Compost Sites



IN THIS ISSUE

- TIRE COLLECTION 1
- OVERSIZED HOUSEHOLD TRASH 2
- CAN'T WAIT FOR CLEAN SWEEP? 2
- DRUG DROP BOXES 3
- AMERICA RECYCLES DAY 4
- HOME COMPOSTING 4
- NO ASHES 5
- COMPOST SITE UPDATES 5
- COMPOST PRODUCTS 5
- RECYCLING DEPOT GUIDELINES 6
- ELECTRONIC NEWSLETTER REQUEST 6
- SCRAP METAL DUMPSTER 6

TIRE COLLECTION ENDS OCTOBER 31ST

The Recycling Center offers a seasonal tire collection service that will close at the end of October. It will reopen in April 2025. Participants often ask why it is only a seasonal collection. The pricing for our tire recycling service is based on the cost of having the large accumulation of tires transported and processed at a reputable tire recycling facility. The cost is based on the weight of the tires shipped, any water collected in the tires can be shaken off as they are loaded. However, during cold weather, water freezes inside the tires and does not come out easily; this adds significantly to the weight and the processing cost. Luckily, there are not a lot of people who want to bring tires in during the winter.

Fees and Guidelines

- \$6.75—per car tire or smaller (5 tires or less).
- \$8.75—per standard truck tire (5 tires or less).
- \$430 per ton (21.5 cents per pound) for:
 - Quantities of 6 or more tires
 - Semi tires
 - Tires on rims
- \$530 per ton (26.5 cents per pound) for off road tires including:
 - Agricultural equipment tires
 - Mining equipment tires
 - Mixed loads containing off road tires
- Stop in the Recycling Center Main Office **before** dropping off tires.
- Bring your waste tires to the Manitowoc County Recycling Center during normal office hours.
- Collection employees reserve the right to judge, based on tire size, and quantity, if a customer is charged on a per tire basis or by tire weight.
- Tire loads should not be contaminated with gravel, mud, brush, plastic, wood or any other non-tire materials. Loads with excessive contamination may be refused or charged a higher rate at the discretion of the Recycling Center.
- Residents and businesses with dump truck load or larger quantities of tires must call the Recycling Center before coming.
- For more information call the Recycling Center at 920-683-4333 or visit Recycling.manitowoccountywi.gov.

Location & Hours:

3000 Basswood Rd
Manitowoc

Monday—Friday
7am—4pm
Saturday
8am—Noon

Tires Accepted:

- Car
- Truck
- Semi
- Tractor
- Motorcycle
- ATV
- Bicycle

***Rubber products that are not tires are not accepted.**



Mission Statement

To provide materials recycling and recovery services to the citizens of Manitowoc County and to keep the public informed about recycling issues.



Manitowoc County Recycling Center & Compost Sites

3000 Basswood Road, Manitowoc WI

920-683-4333

Recycling.manitowoccountywi.gov



OVERSIZED HOUSEHOLD TRASH

The Manitowoc County Recycling Center is often asked what residents can do with oversized household trash items like old furniture or mattresses. We do not collect these items, they are not easily recycled in this area and they are not banned from landfill disposal.

If you have old furniture or mattresses that are in good condition, they may be considered for donation. Be realistic though, not many donation centers will accept these items unless they are in very good condition and they have a need for them. If you go this route check with the donation center first. A little research may also uncover a number of online markets and donation sites that could be used as well.



If you have a curbside trash/recycling service, contact the company that picks up at your house. Some of them can make special arrangements to pick up your items. They will likely have instructions, fees or limits for these services depending on the specific items and amount. The important thing is to communicate with them first. Curbside hauler information can be found on our website on the [What Do I Do With Garbage, Trash, Refuse](#) page.

If you live in an multi-apartment complex with a central trash service you should check with the apartment complex manager or company for their instructions. They probably have instruction for these items in their guidelines or rental agreements. While most have some type of trash/recycling service, they may not have easily available options for bulky or oversized items.

Some residents do not have a company that picks their items up at the curb. Some rural residents drive their items to a municipal drop off site. Those residents should contact their municipal drop off site to learn if they can accept bulky/oversized items and what fees and limitations they might have. Information on the drop off sites for towns and villages in Manitowoc County can be found on our [Municipal Programs](#) webpage.

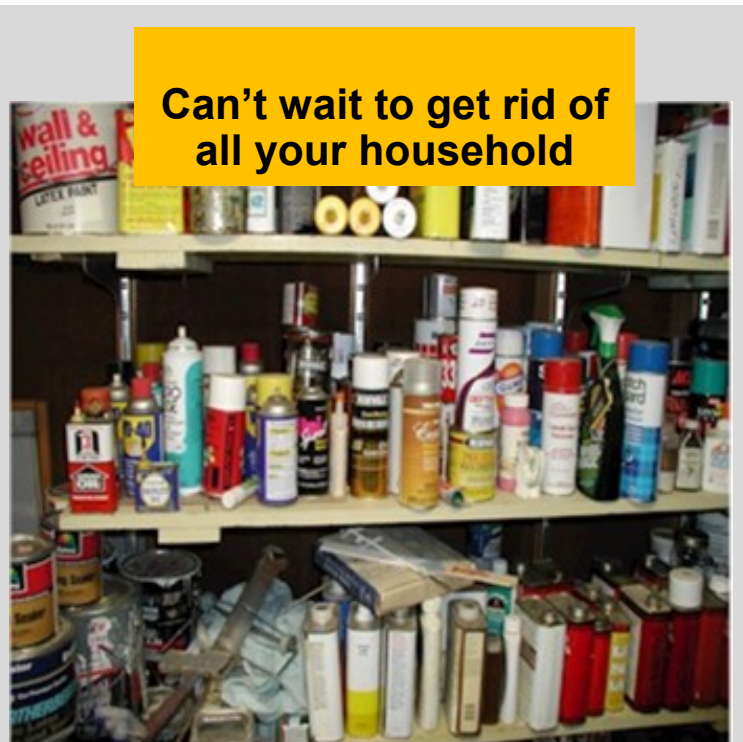
You can also self-haul furniture/mattresses to a landfill. While anyone can take bulky and oversized items to a landfill, they will usually have to pay a fee at the scale. Landfill fees typically have a minimum charge based on weight and this can vary substantially depending on the landfill. Manitowoc County residents may utilize the WM Ridgeview Landfill near Whitelaw, the GFL Hickory Meadows Landfill near Chilton, or may even drive further to use the Outagamie County Landfill. Landfill information can be found on our website on the [What Do I Do With Garbage, Trash and Refuse](#) webpage.

CAN'T WAIT FOR THE CLEAN SWEEP?

If you have old chemicals and want to get rid of them before our next [Hazardous Waste Clean Sweep](#) collection event, you can take them to the Brown County Resource Recovery site. As a non-resident of their area, you will need to pay a fee depending on the type and amount of hazardous materials you bring in. They are only open on designated days of the week. For more information about their program, fees, and guidelines, visit them [online](#) or call 920-492-4950.

Manitowoc County holds a free, one-day, drive through "Clean Sweep" event in mid-May every year. It is free and one day only because it occurs at a temporary location and is partly funded through a grant from WI Department of Agriculture, Trade and Consumer Protection, and a donation from Waste Management, Inc., and has a minimal impact on County funding. Plans are underway to hold a 2025 Clean Sweep event for households on Saturday May 17.

If you can't wait to get rid of your chemicals, Brown County is a great option and they have a stellar facility. If you can wait and prefer to be frugal, our free, one-day event is a great near-by option. Either program will manage your old chemicals in the safest and most environmentally friendly manner.





DRUG DISPOSAL PROGRAM

Drug Drop Boxes are available year-round at participating law enforcement buildings. Participants should remove pills from the original container and put them in a "ziplock" style bag that is quart size or smaller. Pills can be mixed in one bag. Bring the bag to a law enforcement drug drop box. Recycle or dispose of the empty pill bottles and boxes at home. Liquids, creams, and powders stay in their original container with the caps tightened.

October 26, 2024 is the [DEA National Prescription Drug Takeback Day](#). While there are no planned events in the Manitowoc area this fall, our permanent drug drop boxes are part of the program and can be used during the listed hours.

Guidelines:

- Accepted drugs include prescriptions, over the counter, pet medications, controlled substances, and supplements.
- Place pills in a "ziplock" style bag that is quart size or less. Liquids, cremes, and powders can stay in the original container with caps tightened.
- Pill bottles and boxes are NOT accepted. Cross out your personal information and dispose of them or recycle them at home.
- Needles, sharps, mercury devices, chemical waste, electronic glucose monitors, non-medical inhalers, and personal care products like shampoo and cosmetics will NOT be accepted.
- Do NOT bring medications to drug disposal event before or after the listed times.
- Households only. Businesses should call 683-4333 for disposal information.
- Practice safe storage by keeping medications in a secured location.
- Practice reduction by consulting with your physician about your medication needs.
- Never share your prescriptions with another person.

PERMANENT DROP BOX LOCATIONS:

- Manitowoc Co. Sheriff's Office: 1025 South 9th St, 8am-3:30pm M-F
- Manitowoc City Police Dept: 910 Jay St, Manitowoc, 7:30am-4:30pm M-T, 7:30am-11:30am F
- Two Rivers Police Dept: 1717 East Park St, Two Rivers, 8am-4:30pm M-F
- Mishicot Village Police: 511 East Main St, Mishicot, during [Village Hall](#) hours
- Kiel Police Dept: 619 Paine St, Kiel, open 7:30a-3p M-F

Some local pharmacies offer Drug Drop Boxes as well. Since they are not part of the Manitowoc County program, they may have slightly different guidelines. They are a safe and secure method to dispose of your old medications and may be more convenient for many people. Check at your local pharmacy for details.

AMERICA RECYCLES DAY

America Recycles Day is a nationally recognized day designed to build awareness of recycling and its benefits, and to encourage people to recycle correctly and buy recycled products. By recycling, you can help reduce emissions of greenhouse gas and water pollution, save energy, supply valuable manufacturing materials, create jobs, and reduce the need for new landfills. People can easily participate by making an effort to learn about the recycling programs in their community. Visit the Manitowoc County Recycling Center website at

Recycling.manitowocountywi.gov to learn more about local recycling and disposal options. Or try Recyclemorewisconsin.org for information on how to recycle right in Wisconsin. If you want to do more, then make an effort to minimize contamination in your recycling bin, buy products that contain recycled content, and purchase products that can be easily recycled in your community. You can learn more about America Recycles Day at the Keep America Beautiful America Recycles Day webpage.

We would like to encourage everyone to review the recycling guidelines for their curbside program or local drop off site. Ours are listed on our website at Recycling.manitowocountywi.gov. Recycling programs can differ depending on the municipality you live in or the curbside hauler providing your service, this can cause confusion about what is acceptable and how to handle it. Make sure you know the common items that should be recycled. Contamination in recycling is a big issue and it often happens when people assume they know what to recycle, when in fact they are overlooking some important details.

Manitowoc County has demonstrated a very proactive approach towards recycling. In the early 90's approximately 58,000 Tons of solid waste per year were landfilled from Manitowoc County. That number has been reduced to about 32,000 Tons per year because of recycling and waste reduction efforts. In 2023 there was 4.4 million pounds of paper and cardboard, and 669,280 pounds of plastic bottles recycled through the local recycling center. Despite these impressive numbers, there is room to improve. For example, the recycling center cleaned out 167,120 pounds of contamination from the local recycling stream last year. Also, numbers taken from the WDNR statewide waste composition study suggest that about 16% of materials going into landfills are commonly recycled materials, like #1 PET bottles/jars (1.7%), office paper (1.4%), corrugated cardboard boxes (3.2%) and other recyclables.

The Manitowoc County Recycling Center would like to thank Manitowoc County residents and businesses for participating in recycling and special collection programs like the Hazardous Waste Clean Sweep, Drug Disposal Program, Waste Tire Collection, Electronics Collection and the Composting Sites. By taking the time to learn about and use these programs, and others, our participants have helped improve our community, environment, and economics. Visit the Recycling Center at Recycling.manitowocountywi.gov or call 920-683-4333 to learn more about these programs.

**HOME COMPOSTING**

Gardeners and homeowners, turn your household food scraps into rich compost for your garden or plants. Mix kitchen scraps and grass clipping with leaves and turn the pile occasionally until it breaks down. Not only does home composting provide excellent compost, but you can reduce the amount of materials going into your garbage. Large, 13-cubic foot compost bins with locking lids are available at the Recycling Center for only \$60.00 (tax included).



Stop by the Recycling Center at any time during normal business hours and take a look at our floor model. Educational resources for home composting are available as well.

[Home Composting Materials \(WDNR WA-1785 PDF\)](#)

[Home Composting: The Complete Composter \(WDNR WA-182 PDF\)](#)



ABSOLUTELY NO ASHES

Never dump ASHES off at the compost sites. We do not accept them. Our signs, flyer, and website clearly state that we do not accept them. We have had fires started by people dumping ashes. One of those fires shut the Basswood site down for 2 days. Since we started citing people, the incidence of ash dumping has declined, but it does still occasionally happen.

If you are caught dumping ashes at either compost site, you will receive a \$200 citation, even if you didn't see the signs or look at the guidelines.

You may have added ashes to your garden at one time, but we do not want them in our compost site for two important reasons. First, even if ashes seem cool they often still contain embers that can start fires, especially after being crushed by vehicle tires during dry conditions. Second, ashes may contain undesirable chemicals from whatever was burned, and we have no way to know if it was clean or treated wood, or worse. The best thing to do with your ashes is to use them at your property in your garden, or thoroughly douse them in water and let them sit at least a month before sending them to the landfill. If you have curbside pickup service, or use a municipal drop off site, be sure to check their guidelines too; many places do not accept ashes for fire safety reasons.



COMPOST SITE UPDATE

Beginning November 16 the Basswood Road and Woodland Drive Compost Sites will have new operating hours. The Basswood Compost Site will be open Monday-Friday, 7:00 am to 4:00 pm and Saturday from 8:00 am until noon. **Beginning November 16, the Woodland Compost Site will be closed until April 2024.** Beginning November 4, the Recycling Center Main Office will be closed on Saturdays and will reopen on Saturdays beginning April 2024.

Starting November 16...

BASSWOOD COMPOST SITE

3000 Basswood Rd, Manitowoc
Mon-Fri 7am-4pm
Sat 8am-Noon

WOODLAND COMPOST SITE

4191 Woodland Dr, Two Rivers
CLOSED November 16 through March 31

Both the Basswood Road and Woodland Drive Compost Sites are available for drop off of acceptable yard materials during the posted hours. When using the compost sites drive slow and watch for traffic. It is advisable to avoid using the compost sites during or after heavy rains since they can easily become rutted and slippery. Do not use the compost sites outside of the posted hours.

Accepted Items: Grass, leaves, flowers, plants, pumpkins, fruits, vegetables, garden waste, yard clippings, brush, branches (not more than 6 inches in diameter or longer than 5 feet), clean woodchips, clean saw dust, and natural holiday trees.

Unacceptable Items: ASHES, plant pots, seedling trays, bags, plant tags, or anything plastic, stumps, animal waste, sod with soil, topsoil or dirt, rocks, gravel, lumber, garbage, large branches greater than 6 inches in diameter or longer than 5 feet, or non-residential materials without paying the tip-fee.

Loads may be subject to inspection by Recycling Center staff. Illegal dumping is subject to fine per Manitowoc Code Section 6.17. Placing unaccepted items in an otherwise designated recycling container or pile is considered illegal dumping and is subject to fine. The sites are monitored by video surveillance. If you have questions about a particular material, call 683-4333 and ask.



COMPOST PRODUCTS

Mulch and compost products are available at the Recycling Center Main Office during the posted office hours. Purchases must be made before loading. Note that the office hours are different than the drop off site hours. Loading is generally available Monday through Friday from 7:30am to 3:30pm. Call 920-683-4333 for more info.



PRODUCT PRICE BY CUBIC YARD

- Screened Compost \$20
- Non-screened Compost \$5
- Wood Mulch \$15
- Shredded Leaf Mulch \$12

*Minimum purchase for loading is 1/2 cubic yard
Minimum purchase is 1/4 cubic yard (about 50 gallons)*

DELIVERY

- 6 cubic yards max.
- Zone 1 (within 10mi) \$40.00
- Zone 2 (over 10mi) \$65.00

RECYCLING CENTER OFFICE

3000 Basswood Rd, Manitowoc
Mon-Fri 7am-4pm, Sat 8am-Noon
(Office is closed Saturdays from Nov 1—March 31)

RECYCLING DEPOT

The Manitowoc Recycling Center maintains a residential drop off area at the Recycling Center Main Office located at 3000 Basswood Road. It is open Monday-Friday from 7am to 4pm, and Saturday from 8am to noon. This site is intended for use by all county residents. There is no trash or garbage drop off at this location. Contact a local hauler or the Ridgeview Landfill for disposal of trash. Different municipal drop off sites may be more accessible to you depending on the city, township or village you are from.

General Drop Site Guidelines

- Place your recyclables in the bunker or receptacle labeled for that material.
- Remove any plastic bags or strings and take them home with you to place in your trash.
- Do not place nonacceptable items in the bunkers or receptacles.
- Do not place materials outside receptacles on the ground.
- Large loads of cardboard, paper or plastic can be placed on appropriate pile on the tipping floor.
- Use caution driving through the drop site and on the tipping floor.



The recycling and compost areas are monitored for illegal dumping, littering, and other issues. Please follow all posted guidelines.

<p><u>Paper</u> Includes newspapers, junk mail, magazines, computer paper, books with metal or plastic binding removed etc.. Paper should be clean and dry. No paper contaminated with food or oil. No paper coated with foil, plastic or heavy glue. No plastic/foil wrapping paper.</p>	<p><u>Plastic</u> Check for a neck. We only accept #1 and #2 bottles and jars. Bottles and jars should be empty. No tub shaped containers or bottles that contained oil or pesticide (even if rinsed). No plastic wraps, films, bags, trays, pails, packaging peanuts, Styrofoam, or any other non bottle shaped item. Please do not tie milk jugs together or tie in plastic bags.</p>
<p><u>Glass Bottles</u> Any color glass bottle or jar can be recycled. Put into designated bunker. Remove lids or caps and rinse. No window glass, mirrors, light bulbs, clay, ceramics, drinking glasses or ovenware.</p>	<p><u>Cartons</u> Cartons include shelf stable and refrigerated containers for wine, milk, juice, cream, soy milk, soup, and egg substitutes. Drop off cartons with the plastic bottles. They should be emptied and flattened.</p>
<p><u>Cardboard</u> Should be clean and flattened. No heavily soiled cardboard or cardboard coated with wax, tin, or plastic. Tubes, beverage carriers and pizza boxes with moderate grease/cheese spots are acceptable.</p>	<p><u>Cans</u> Tin, steel, and aluminum cans. Coated cans, foil, and pie tins are ok. Empty and rinse out food residue.</p>

ELECTRONIC NEWSLETTER REQUEST
Are you interested in receiving current updates recycling programs in Manitowoc County? Join our electronic mailing list to receive our quarterly newsletter. Either call us at 920-683-4333 or email jonreisenbuechler@manitowoccountymi.gov and request to be added to our email distribution list. The recycling center will not give away or sell your information. You will receive our quarterly newsletter detailing news and information about the recycling center and related events.

SCRAP METAL DUMPSTER
The Recycling Depot now has a scrap metal dumpster available for your convenience. It is for clean scrap metal only, including steel, iron, copper, sheet/cast aluminum, tin, and mixed metals. Please remove excessive non-metal components.

- NO propane (or other) tanks
- NO electronics or appliances
- NO batteries or lamps
- NO garbage, plastic, wood, or rubber
- NO chemicals, gas, oil, or other hazardous wastes.



The Manitowoc County Recycling Center is operated by Ascend Services Inc. Formerly Holiday House of Manitowoc Inc.

The Manitowoc County Recycling Center is a business unit of the Manitowoc County Department of Public Works.